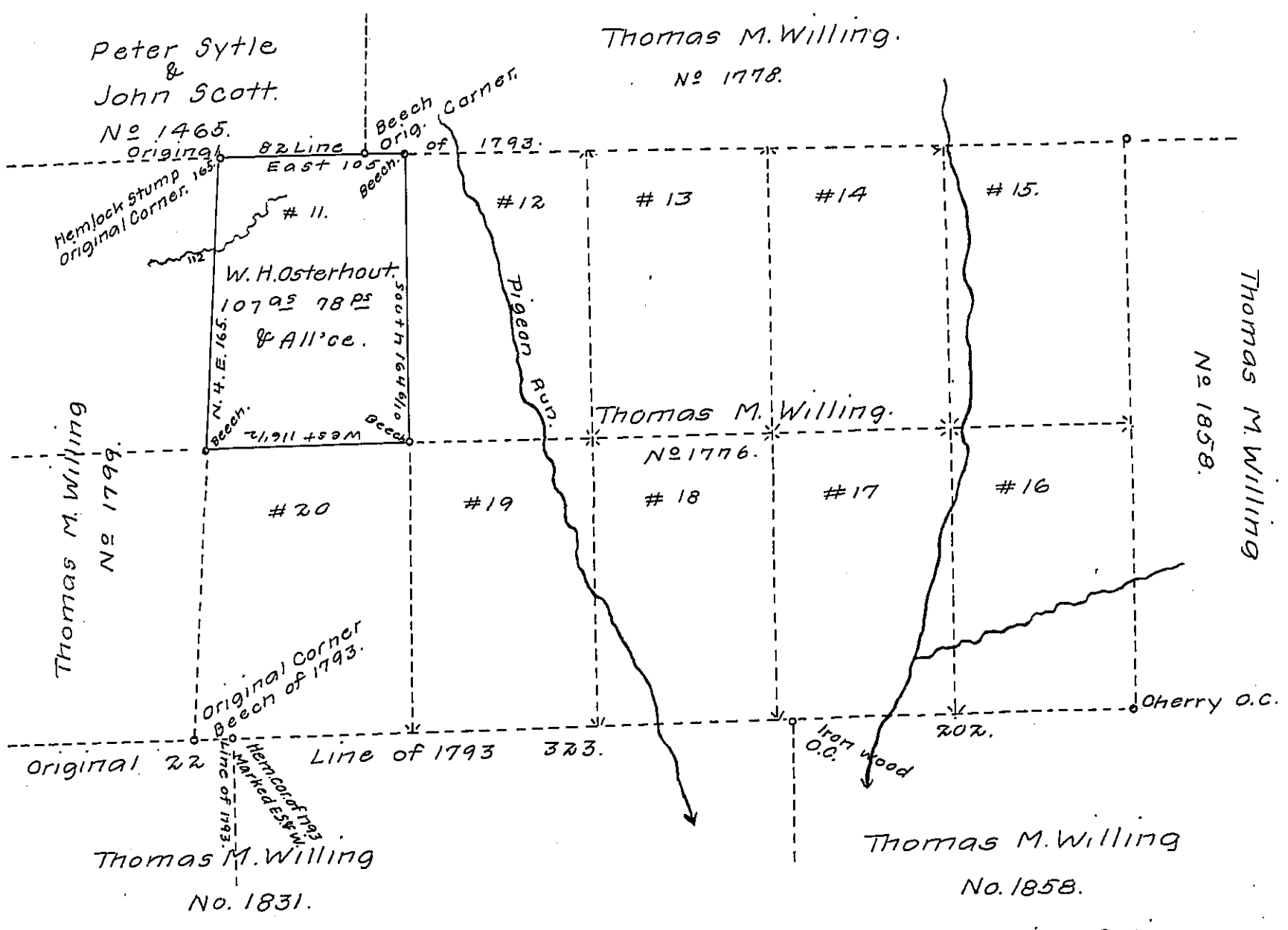


FORM NO 1.



A draft of a tract of land situate in the township of High-land and county of Elk, containing one hundred and seven acres, seventy-eight perches and allowance of six per centum for roads etc. surveyed for W. H. Osterhout the twenty-fifth day of April 1894, it being a part of a larger tract of one thousand & eleven acres $\frac{3}{4}$ & allowance, originally surveyed in pursuance of a warrant granted to Thomas M. Willing dated the 18th day of August 1792 and numbered 1776,

E. E. Willard,

County Surveyor.

To Thomas J. Stewart, Esq.,
 Secretary of Internal Affairs.

IN TESTIMONY that the above is a copy of the original remaining on file in the Department of Internal Affairs of Pennsylvania, made conformably to an Act of Assembly approved the 16th day of February, 1833, I have hereunto set my Hand and caused the Seal of said Department to be affixed at Harrisburg, this first day of August, 1907.

Henry A. Buck
 Secretary of Internal Affairs.